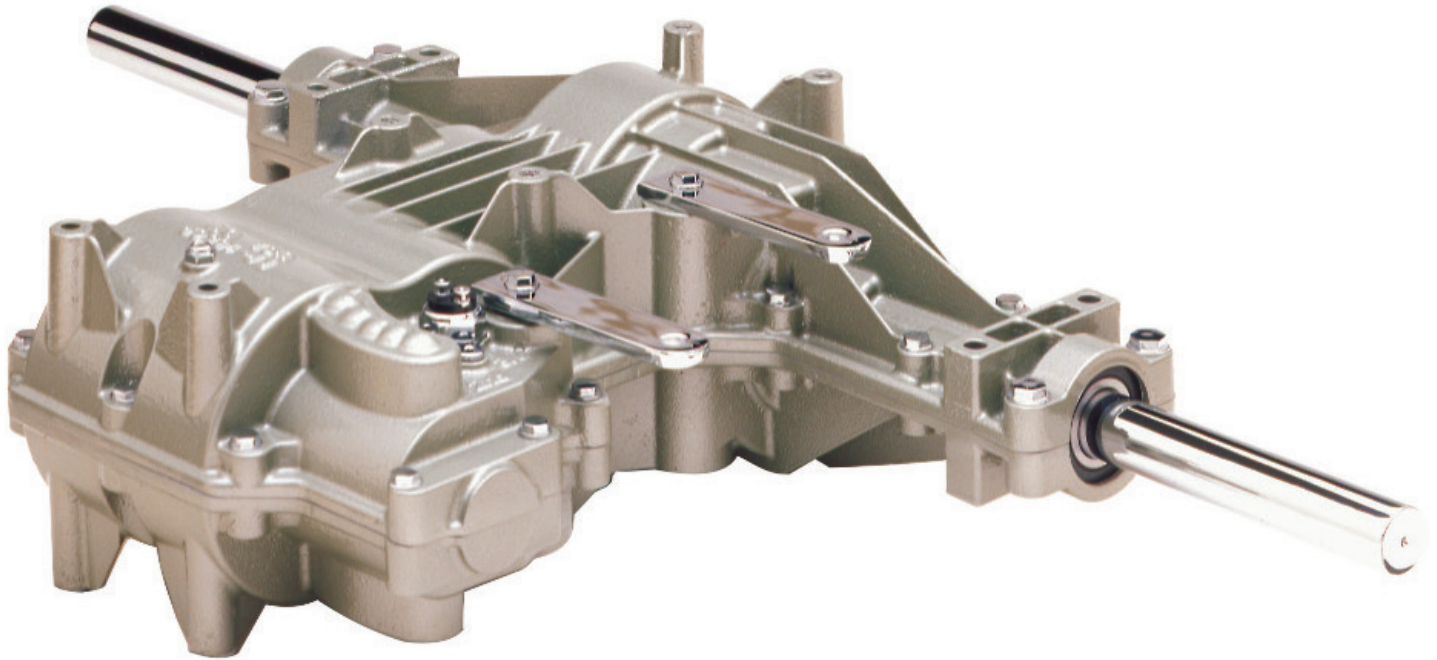


# PEERLESS® GEAR

Your Transmission Solution

Made in the USA Since 1945



## 855 Series Manual Shift Transaxles

**Driving Choice. Delivering Dependability.**

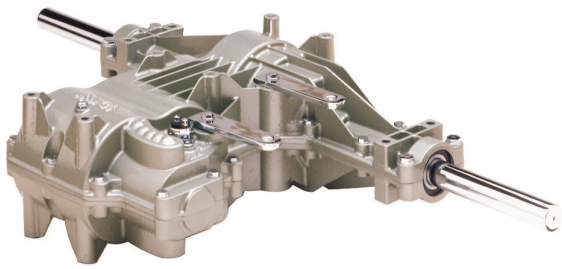
All Peerless products are supported by a global dealer/distributor network of 12,000+ locations providing convenient worldwide service.

**PEERLESS GEAR**  
1555 S. Jackson St.  
Salem, IN 47167 USA

US Customer Support 812-675-GEAR (4327)  
US Engineering 812-883-7960  
US Sales 812-883-7979

International Sales  
& Engineering  
0044 7889 668531

[peerlessgear.com](http://peerlessgear.com)



# 855 Series Transaxles

## PEERLESS® GEAR

Your Transmission Solution  
Made in the USA Since 1945

## Technical Specs

### Output torque

450 ft. lbs. (610 N-m)

### Maximum Forward Speeds

3

### Axle Size

1" (25.4 mm)

### Maximum Input Speed

2,000 RPM

### Maximum Tire Diameter

23" (584 mm)

### Weight on Tires

600 lbs. (272 kg)

### Input Shaft

Horizontal

### Mounting - 8 Points

Axle and housing  
mounts

### Differential

Steel cut bevel gear  
(optional locking  
differential assembly)

### Neutral Switch

Optional

### Shift Keys

2- or 4-shift  
keys



## Features & Benefits

**PEERLESS 855 Series Transaxles** are the best in class. The 855 Series units will accept a Comet 30 Series CVT for additional speed control convenience.

- **Housing** – Die-cast aluminum housings offer outstanding heat dissipation and durability; Housings are sealed to prevent the entry of water and dirt, extending component life
- **Lubrication** – Specially formulated grease
- **Axle Shafts** – 1" (25.4 mm) with key slots
- **Differential** – Automotive-type steel bevel gears provide smooth, long lasting performance
- **Optional Differential Lock** – Provides traction necessary for loose dirt or gravel surfaces
- **Bearings** – Ball bearings on axles, needle bearings on input and all other shafts
- **Gears** – All gears are cut steel and heat-treated
- **Gear Ratios** – Forward: 24.78:1, 18.75:1, 17.08:1, 14.29:1, 12.06:1, 9.44:1, 8.04:1, 6.31:1, 5.36:1, 4.93:1 and Reverse: 61.26:1
- **Brake** – Can be used as a parking brake  
NOTE: Brake is effective only when the power source is not driving the input shaft of transmission/transaxle  
CAUTION: Brake requires periodic maintenance and adjustment to assure safe operation of equipment
- **Applications** – Air craft tug, ride on seeders, utility vehicles, fun carts and go karts

**PEERLESS GEAR**  
1555 S. Jackson St.  
Salem, IN 47167 USA

US Customer Support 812-675-GEAR (4327)  
US Engineering 812-883-7960  
US Sales 812-883-7979

International Sales  
& Engineering  
0044 7889 668531

[peerlessgear.com](http://peerlessgear.com)